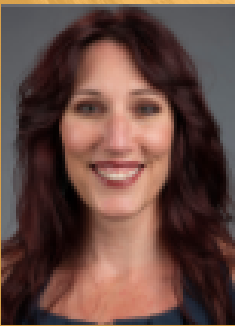


**Butte County SELPA Presents:**

# **SUICIDE IN SCHOOL-AGED CHILDREN**

*What to look for, what to say, what to do.  
National suicide rates are on the rise in youth aged 10-24. Additionally, suicidal thoughts and behaviors for our youth are more common than we'd hope. Even for professionals, talking about suicide can be uncomfortable. However, teachers and parents may be the first to identify suicidal youth. This discussion will focus on what to do when you suspect suicidal thoughts or behaviors in your child or student.*

**November 16, 2020  
5pm - 7pm  
Via Zoom**



*Presented by:  
Dr. Shelley Hart  
CSU Chico,  
Department of Child  
Development*

*Register **HERE** by  
November 12, 2020  
<https://bcoe.k12oms.org/2224-194118>*

**Questions?** Contact  
Carla Geyer  
Butte County SELPA  
[cgeyer@bcoe.org](mailto:cgeyer@bcoe.org)  
(530) 532-5922